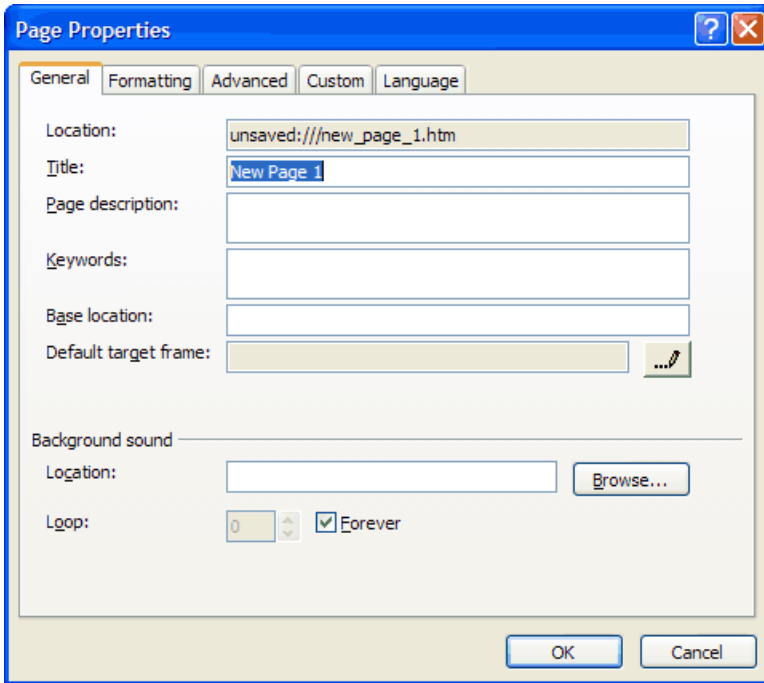


# Page Properties

You can set or change properties—for example, title, background color, background sound, and character encoding— of the active Web page by using the **Page Properties** dialog box. The dialog box provides options on the following tabs.

*All information contained in this document is straight from the Microsoft Office Help Page. If you need help at any point while using Microsoft Office, simply press F1 on your keyboard or click the Question Mark symbol located in any dialogue box.*

---



## General Tab

**Location** Displays the location of the Web page file—for example, a URL or a location on your computer or on a file server.

**Title** Type the title of the Web page. The title appears in the title bar of a Web browser.

**Page description** Type a brief description of the Web page. Site visitors see this description in search results if they search for content on your Web site or on the World Wide Web.

**Keywords** Type one or more keywords, separated by a comma and a space, that describe the contents of the Web page. Some Internet search engines use these keywords to determine whether your page satisfies a search query.

**Base location** Type the base URL for resolving hyperlinks in the Web page. When a site visitor clicks a link in the page, the Web browser appends the destination of the hyperlink to the base location you specify. For example, if the base location is `http://www.microsoft.com/` and the destination of a hyperlink is `/frontpage`, a Web browser opens the page at `http://www.microsoft.com/frontpage`.

**Default target frame** Displays the name of the frame in which you want to open the destinations of hyperlinks in the Web page, if you don't specify a frame for each hyperlink. To change the frame, click the button next to the **Default target frame** box, and then select the frame you want.

**Page direction** Sets the direction of text and other items in the Web page. This option is available only if you have enabled support for multiple languages in Microsoft FrontPage.

## Background sound

**Location** Type the path and file name of the sound file you want to play when a site visitor opens the Web page, or click **Browse** to locate the file.

**Loop** Enter the number of times you want the sound to play when a site visitor opens the Web page. To play the sound endlessly, select the **Forever** check box.

## Formatting Tab

**Background picture** Adds a graphic to the background of the Web page. If the graphic is not as wide or as long as the Web page, the graphic repeats in the background of the page and scrolls with the text and other elements in the page.

**Make it a watermark** Adds a graphic to the background of the Web page as a watermark. If the graphic is not as wide or as long as the Web page, the graphic repeats in the background of the page and does not scroll with the text and other elements in the page. It remains fixed in the background.

**Browse** Type the path and file name of the graphic file you want to use as a background graphic, or click **Browse** to locate the file.

**Properties** Click to change the format and other settings for the background graphic. This option is available only if you have already added the background graphic to the page.

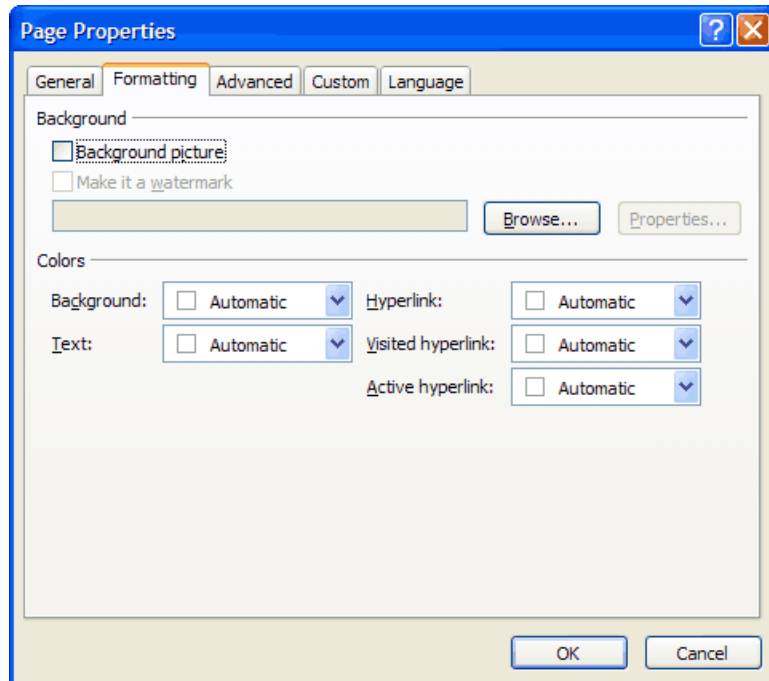
**Background** Changes the background color of the Web page. In the **Background** box, click the color you want.

**Text** Changes the default color of text in the Web page. In the **Text** box, click the color you want.

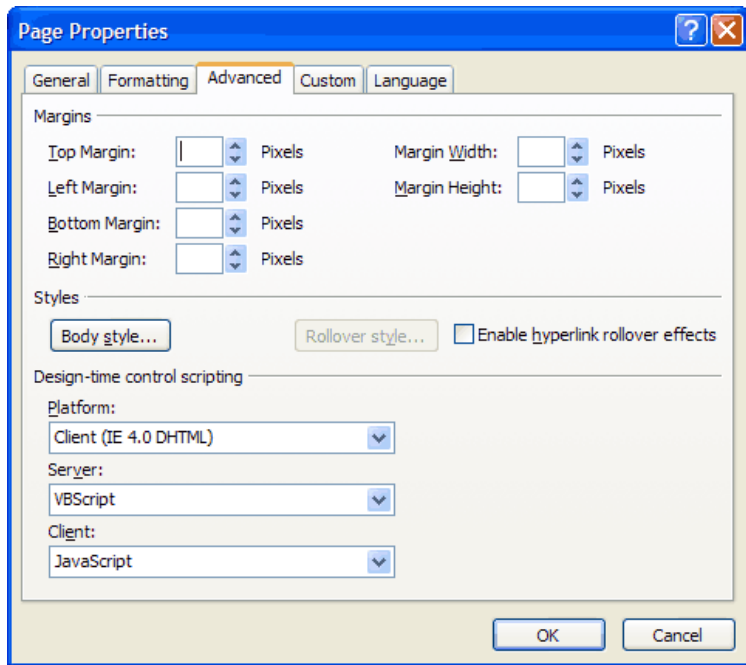
**Hyperlink** Changes the color of text for hyperlinks that a site visitor hasn't visited. In the **Hyperlink** box, click the color you want.

**Visited hyperlink** Changes the color of text for hyperlinks that a site visitor has already clicked. In the **Visited hyperlink** box, click the color you want.

**Active hyperlink** Changes the color of text for a hyperlink as a site visitor clicks it. In the **Active hyperlink** box, click the color you want.



## Advanced Tab



**Top Margin** Enter the amount of space you want between the top of the Web browser window and the top of the first element in the Web page.

**Left Margin** Enter the amount of space you want between the left edge of the Web browser window and the left edge of unindented text and other elements in the Web page.

**Bottom Margin** Enter the amount of space you want between the bottom of the Web browser window and the bottom of the last element in the Web page.

**Right Margin** Enter the amount of space you want between the right edge of the Web browser window and the right edge of unindented text and other elements in the Web page.

**Margin Width** Enter the amount of space you want between the left and right edges of the Web browser window and the left and right edges of unindented text and other elements in the Web page, if you want to use the same value for the left and right margins.

**Margin Height** Enter the amount of space you want between the top and bottom edges of the Web browser window and the top and bottom edges of the first and last elements in the Web page, if you want to use the same value for the top and bottom margins.

**Body style** Click to change the default format of text in the Web page. If you apply formatting settings to specific text or an element in the page, the **Body style** settings do not apply to that text or element. If you add an embedded or external [cascading style sheet](#) to the page, some of the **Body style** settings may no longer apply to text or elements in the page, depending on the settings.

**Rollover style** Click to specify how you want the text of hyperlinks to appear in the Web page when a site visitor rests the pointer over them. This option is available only if the **Enable hyperlink rollover effects** check box is selected.

**Enable hyperlink rollover effects** Changes the appearance of text for hyperlinks when a site visitor rests the pointer over them.

**Platform** Specifies whether [design-time controls](#) that generate scripts for the Web page run those scripts on the client (the site visitor's computer) or on the server.

**Server** Specifies the default scripting language used by design-time controls that generate server-side script for the Web page.

**Client** Specifies the default scripting language used by design-time controls that generate client-side script for the Web page.

## Custom Tab

### System variables (HTTP-EQUIV)

**Name** Lists the names of properties in metadata (<meta>) elements that have an **http-equiv** attribute, if you have defined custom metadata elements with this attribute for the Web page. This type of metadata element tells Web browsers how to open and interpret the page. For example, a metadata element that includes **http-equiv="Content-Language"** specifies the language of the text in the page.

**Value** Lists the value of each property in metadata elements that have an **http-equiv** attribute.

**Add** Click to define the property and value for a new metadata element that has the **http-equiv** attribute.

**Modify** Click to change the property or value of the selected metadata element.

**Remove** Deletes the selected metadata element.

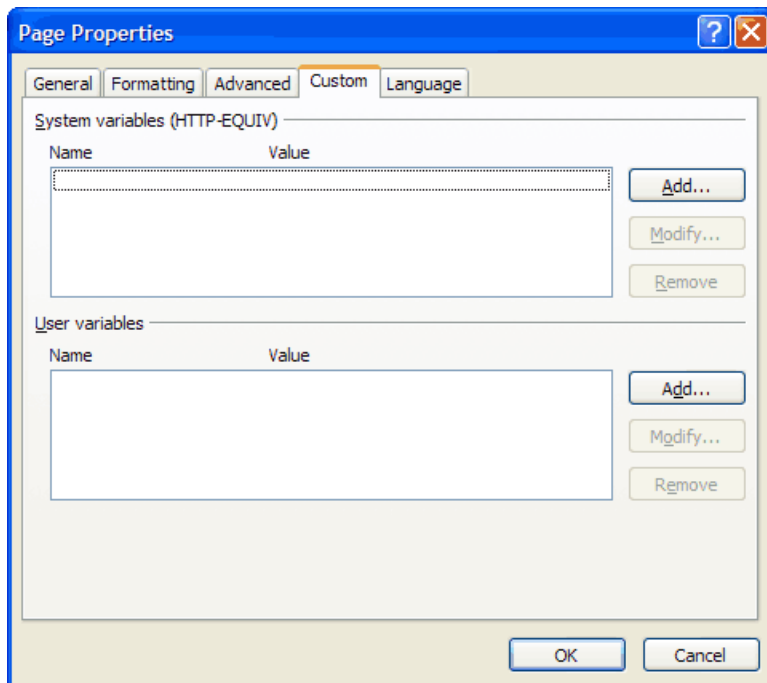
**Name** Lists the names of properties in custom metadata (<meta>) elements that you have added to the Web page.

**Value** Lists the value of each property in the custom metadata elements that you have added to the Web page, including the description and keyword information you specify on the **General** tab of the **Page Properties** dialog box.

**Add** Click to define the property and value for a new metadata element for the Web page.

**Modify** Click to change the property or value of the selected metadata element.

**Remove** Deletes the selected metadata element.



## Language Tab

**Mark current document as** Specifies the language of the text in the Web page. This setting also determines the language that the spelling checker uses when you check the spelling of text in the page.

**Save the document as** Sets the character encoding of the Web page. The character encoding allows Web browsers to interpret the characters in the page and display those characters correctly.

**Reload the current document as** Sets the character encoding of the Web page and opens the page again with that encoding, after you close the dialog box.

