

Microsoft FrontPage Types of Images

There are 2 types of graphic files GIFs and JPEGs.

All graphic images must be saved in special image files that can be recognized by internet browsers; FireFox, Internet Explorer, Mac.

FrontPage can convert many different types of images into either of GIF or JPEG.

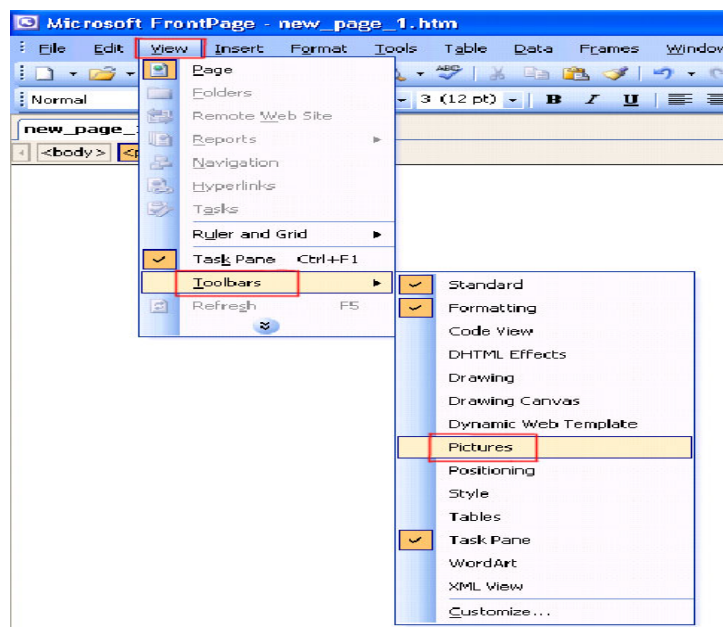
The three main differences between GIF and JPEG are these:

1. A GIF file can **interlace**, which mean the people who visit your website will wait for the images to appear and what they will see is a blurry image fading into view. A JPEG does not interlace so the picture will load line-by-line from top to bottom until completed
2. A GIF file, the background can be made transparent so it makes your image look like its floating. A JPEG file image does not have this option.
3. A GIF file can only display 256 colors, and a JPEG can display millions of colors.

If you are putting photos on the web for people to view you would want to use JPEG for the fact that its high quality. The downside of that is, it will take longer to download.

To begin using and working with images you will need to activate the images toolbar.

1. Make sure FrontPage is open and your document you want to work on is open.
2. Click **VIEW** on the menu bar, scroll over **Toolbars**, select **Pictures**.



This is what the picture toolbar look like



FrontPage also has ways to put pictures into your document. They include:

1. Clip Art- pre-made images that you can drag-and-drop
2. From File- images from your own files you can insert
3. New Photo Gallery-

To get to these options for images

1. Click on **Insert** on the menu bar
2. Scroll down to **picture**
3. Select what option you would like to use.

